

ORDINANCE NO: 2022-BC-O- 11

AN ORDINANCE AMENDING THE OFFICIAL ZONE MAP AS TO CERTAIN REAL ESTATE WITHIN THE COUNTY OF MADISON, INDIANA, AS HEREIN DESCRIBED

WHEREAS, an Ordinance has been referred to the duly authorized Plan Commission of Madison County, Indiana, for a change in the Official Zone Map as to certain real estate in said County as hereinafter described; and,

WHEREAS, the Madison County Plan Commission has given proper notice and conducted a public hearing for this Ordinance and, thereafter, made a favorable recommendation with conditions to the Board of Commissioners of Madison County, Indiana, on October 11, 2022; being Petition 2022-Z-008.

NOW THEREFORE, BE IT ORDAINED by the Commissioners of Madison County, Indiana, under the authority of Indiana Code § 36-7-4-608, and all acts amendatory thereto as follows:

SECTION 1. That the Zoning Ordinance of Madison County, Indiana, be amended to change the Zone Map as incorporated therein and the following described real estate in Madison County, Indiana, to wit:

Parcel Nos. 48-12-27-400-009.000-033

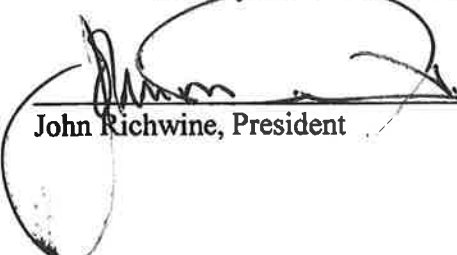
(See attached Map - Exhibit A)

be and the same is hereby rezoned from the present zoning of CR (Conservation Residential) to LC (Local Commercial) zoning.

SECTION 2. This Ordinance shall be in full force and effect from and after its passage by the Commissioners of Madison County, Indiana, and publications as by law provided.

SO ORDAINED by the Board of Commissioners of Madison County, Indiana, this 15th day of November, 2022.

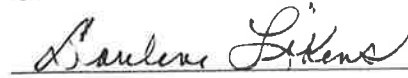
Madison County Board of Commissioners



John Richwine, President



Kelly Gaskill



Darlene Likens

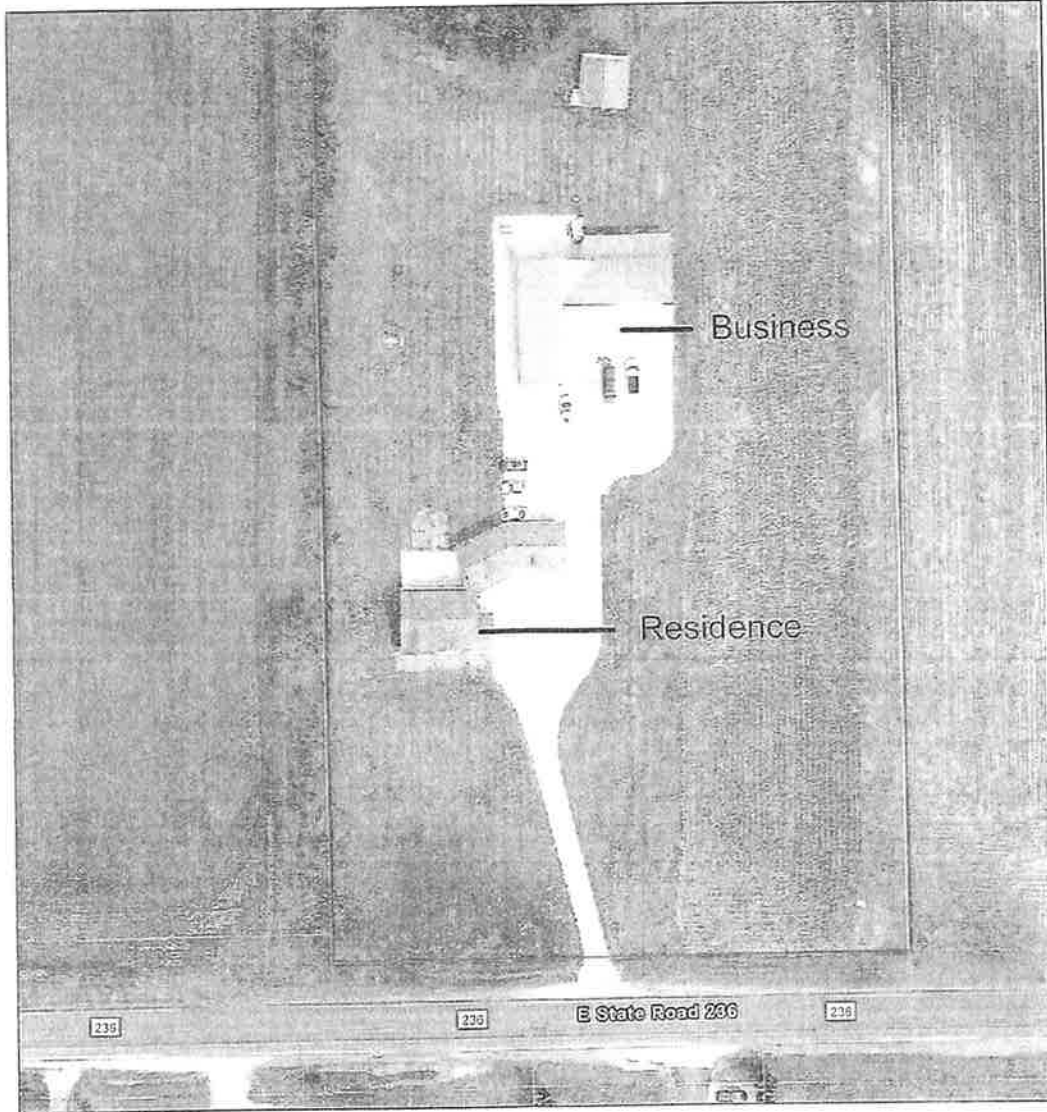
Attest:



Rick Gardner, Auditor

Prepared By:
Jeffrey K. Graham
GRAHAM, FARRER & WILSON, P.C.
1601 S. Anderson Street, PO Box 494
Elwood, IN 46036
(765) 552-9878
jgraham@fwwlawyers.com

48-12-27-400-009.000-033



6/16/2022, 3:34:05 PM

Madison County Parcels

Source: Esri, Maxar, Earthstar, GeoEye, IGN, AerGRID, AIRPHOTOS, IGN, Esri, HERE, Garmin, FAO, NOAA, USGS, OpenStreetMap contributors, and the GIS User Community

MCCOG | Maxar, Microsoft, Esri, Community Maps Contributors, MCCOG, OpenStreetMap, Microsoft, Esri, HERE, Garmin, SafeGraph, GeoTechnologies, IGN, MET, NASA, USGS, EPA, NPS, US

**CERTIFICATION OF RECOMMENDATION OF THE
MADISON COUNTY PLAN COMMISSION TO THE
MADISON COUNTY BOARD OF COMMISSIONERS
CONCERNING PETITION 2022-Z-008**

Comes now the Madison County Plan Commission and submits the following **FAVORABLE** recommendation to the Madison County Board of Commissioners on Petition 2022-Z-008, which address is 3574 East SR 236, Anderson, Madison County, Indiana, and more specifically identified as Parcel No: 48-12-27-400-009.000-033 with no conditions.

WHEREAS, this Certification of Favorable Recommendation is being submitted within ten (10) days after the meeting held by the Madison County Plan Commission concerning Petition 2022-Z-008 for Rezone from CR to LC.

DATED: October 11, 2022

MADISON COUNTY PLAN COMMISSION

/s/ Cory Bohlander
Cory Bohlander, Vice-President

ATTEST:

/s/ Stacey Hinton
Stacey Hinton

Prepared By:
Jeffrey K. Graham #26380-29
GRAHAM, FARRER & WILSON, PC
1601 S. Anderson Street, PO Box 494, Elwood, Indiana 46036
Telephone: (765) 552-9878